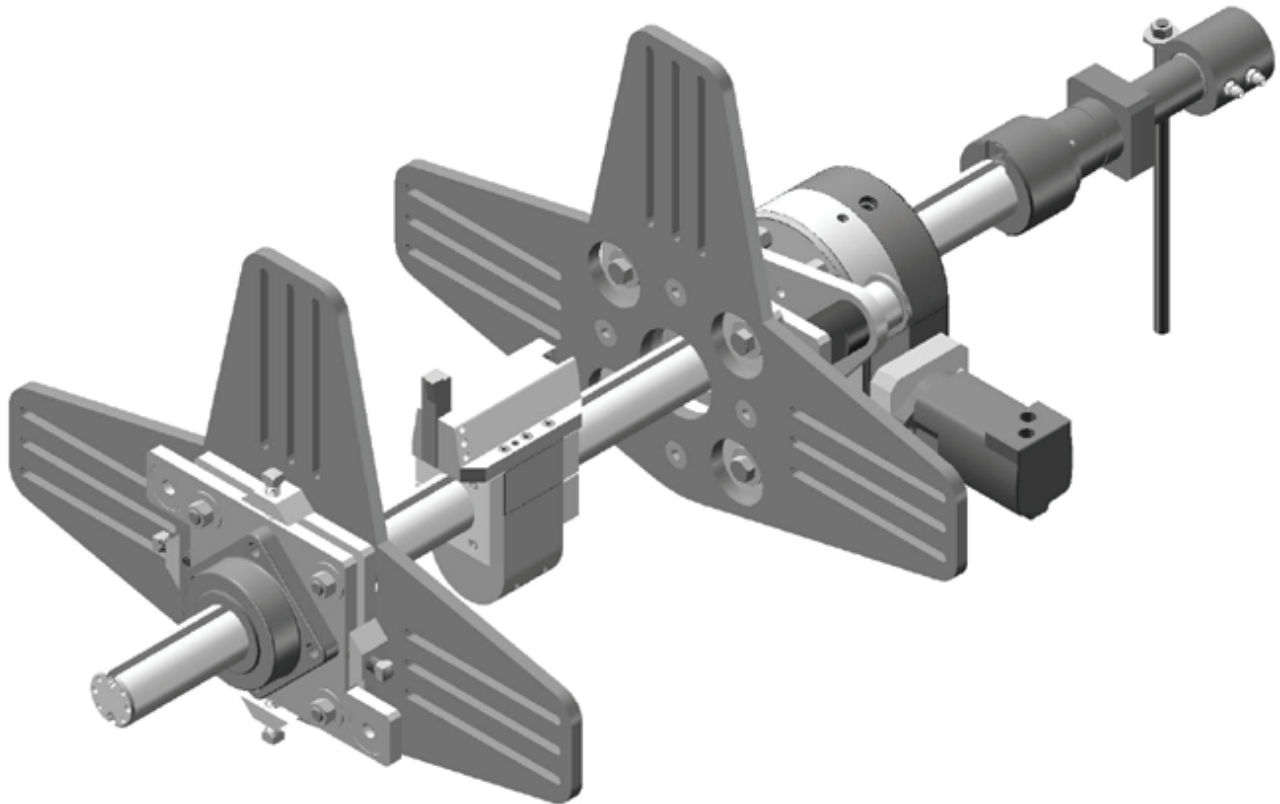


YORK

PORTABLE MACHINE TOOLS

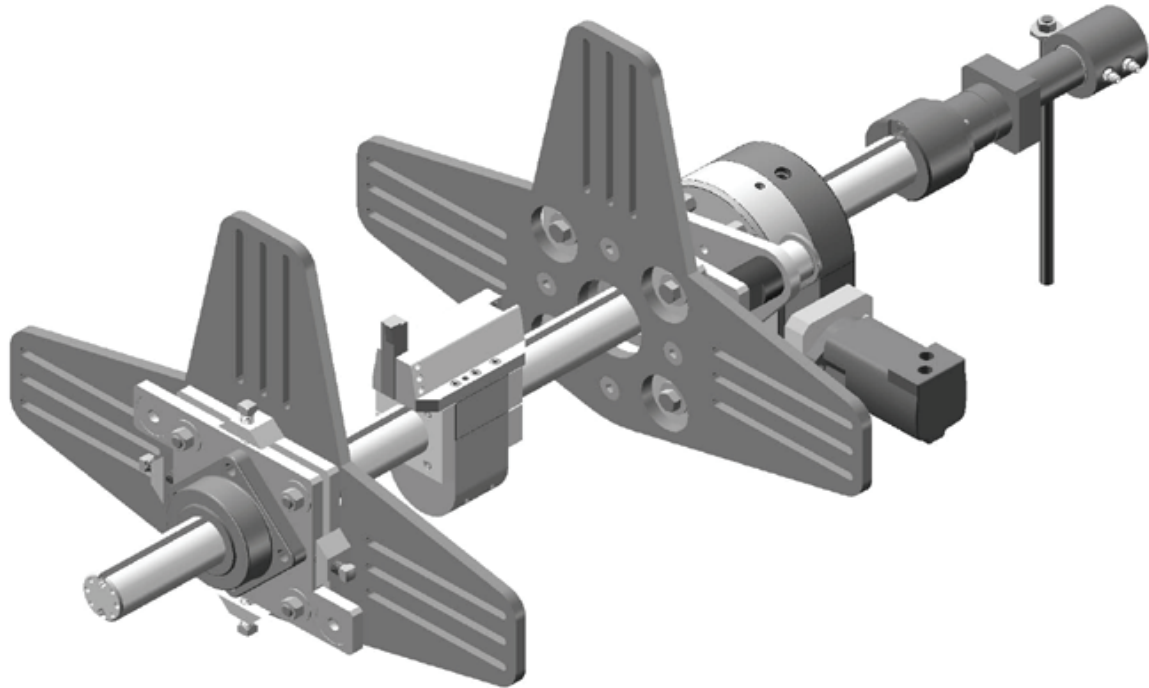
12-36 Line Boring Machine And Accessories Catalogue



Portable - Powerful - Flexible - Easy to Use

Line Boring | Bore Welding | Inline Turning | Rotary Milling
1641-17th Ave. Campbell River BC Canada V9W 4L5
1-888-783-9675

12-36 Line Boring Machine



Sample package shown

Features

- Boring diameters from 8-36" (203 - 914mm)
- Twin lead screws for balanced feeding
- Variable and reversible feed rates
- Variable and reversible rotation speeds
- X/Y adjustable bearing mounts

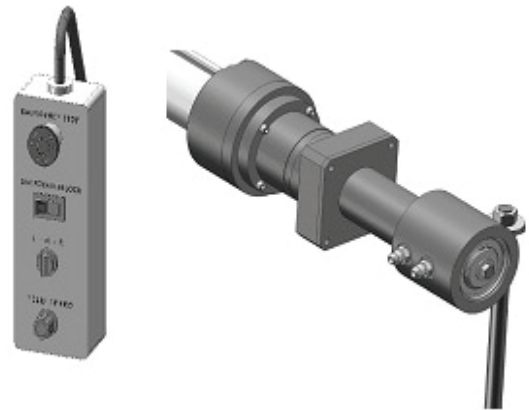
Portable - Powerful - Flexible - Easy to Use

12-36 Line Boring Machine

Feed System with Pendant

- Feed speeds from 0-2" per min.
- Traverse speeds from 3-4" per min.
- Hydraulic feed motor with variable speed
- 20ft (7 meter) control cables

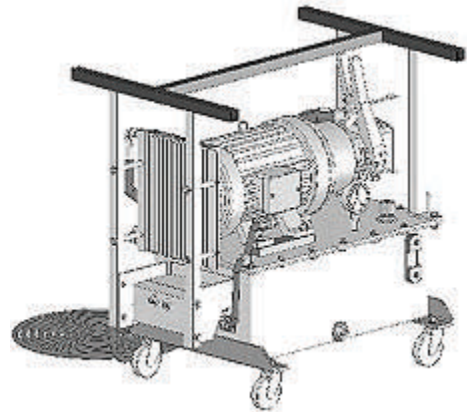
Part number: 1236-145



Hydraulic Power Supply 10HP

- Reversible hydrostatic drive unit with variable bar speeds
- 350ft lbs torque (474Nm)
- 15 gallons per min at 2400 PSI
- Available in 220 and 480 or 575 volt 3 phase
- 50 or 60 Hz
- 14 gallon (63 liter) reservoir with oil cooling

Part Number: 1236-001



Portable - Powerful - Flexible - Easy to Use

12-36 Line Boring Machine

Rotational Drive

- Hydraulic motor and gear drive
- Dripless quick connect fittings
- Billeted aluminum case
- 2 bar locking solenoid
- Optional motors for custom speeds available

Part Number: 1236-250



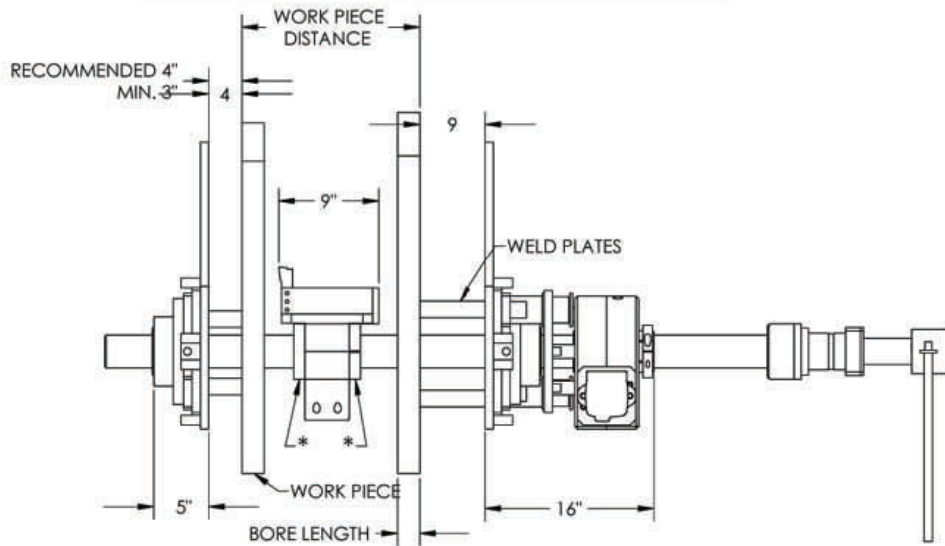
Setup

The York 12-36 can be set up several ways depending on the work area. Tack weld plates are provided, but in some cases you may want to pick up an existing bolt pattern on the work piece. If so a special set up fixture would be required and can be manufactured by York Portable Machine Tools.

- Using the bar length chart select the correct length boring bar for the job. (pg. 5)
- Attach the three leg mounting fixture to the work piece
- Mount the bearings on each end and bolt them to the bearing plates
- Insert the boring bar
- Mount the two halves of the head to the boring bar. Tool head extensions may be required for larger bores. Extensions are provided in the kit
- Center the bar by sweeping the bore. Adjust the bar alignment with the jacking screws on the jacking plate. When the bar is aligned tighten the bearing to the jacking plate to prevent further movement.
- Attach the feed motor to either end of the boring bar and connect the hydraulic bar drive.

Portable - Powerful - Flexible - Easy to Use

TO DETERMINE RECOMMENDED BAR LENGTH



34" PLUS WORKPIECE DISTANCE = MINIMUM BAR LENGTH

Portable - Powerful - Flexible - Easy to Use

12-36 Line Boring Machine Parts and Options

3" (76mm) Boring Bar

- Chrome boring bar
- Full length lead screws

Part Number: 1236-101 (under 10 feet)

Part Number: 1236-150 (over 10 feet)

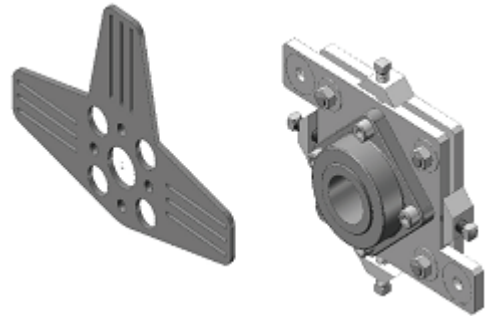


Three Leg X/Y Mounting

- 3" (76mm) X/Y bearing assembly
- Jacking plates and set screws

Part Number: 1236-303
Three leg mounting fixture

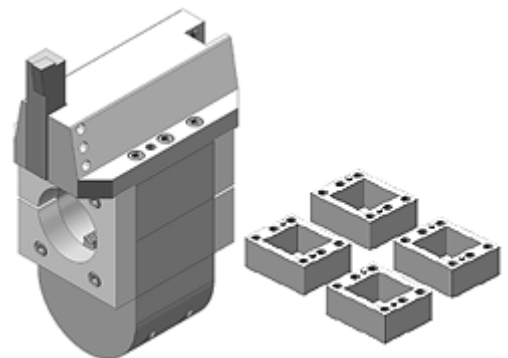
Part Number: 1236-320
X/Y mount with bearing



Tool Head with Extension Blocks

- 1" (25.4mm) insert tooling
- Extension blocks 12-24" (305-610mm)
- Extension blocks 24-36" (610-915mm)

Part Number: 1236-415



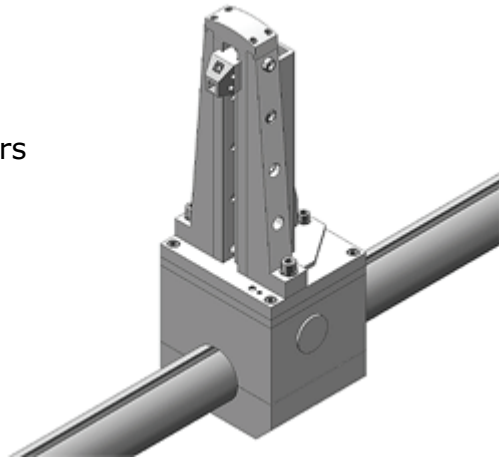
Portable - Powerful - Flexible - Easy to Use

12-36 Line Boring Machine Parts and Options

Optional Facing Head and Grooving Tool

- Facing from 12 to 36" (304-914mm) diameters

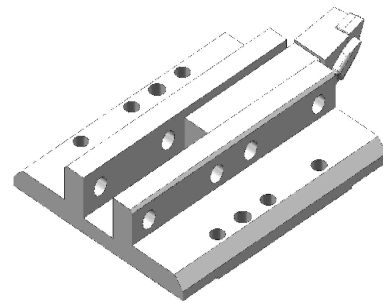
Part Number: 1236-600



Optional Small Boring Head

- 8-12" (203-304)mm

Part Number: 1236-410



Portable - Powerful - Flexible - Easy to Use